

A Defect Correction Method for the Evolutionary Convection Diffusion Problem with Increased Time Accuracy

A. Labovschii^{1,2*}

October 18, 2007

Abstract

This work extends the results of [L07] by presenting a defect correction method with increased time accuracy. The desired time accuracy is attained with no extra computational cost. The method is applied to the evolutionary transport problem, and is proven to be unconditionally stable. In the defect step, the artificial viscosity parameter is added to the Peclet number as a stability factor, and the system is antidiffused in the correction step. The time accuracy is also increased in the correction step by modifying the right hand side. Hence, we solve the transport problem twice, using the Crank-Nicolson scheme (with the artificial viscosity parameter added), and obtain the accuracy of $O(h^2 + k^4)$. The computational results are provided, that verify the claimed space and time accuracy of the approximate solution.

Key Words: defect correction, convection diffusion equation, artificial viscosity, increased time accuracy.

AMS Subject Classification: 65M12, 65M60, 76R99

*Department of Mathematics, University of Pittsburgh, Pittsburgh, PA 15260

¹ayl2@pitt.edu, <http://www.pitt.edu/~ayl2>

²Partially supported by NSF Grant DMS-0508260

1 Introduction

Consider the evolutionary convection diffusion problem: find $\mathbf{u} : \Omega \times [0, T] \rightarrow \mathbb{R}^d$ ($d = 2, 3$) such that

$$\begin{aligned} \mathbf{u}_t - \epsilon \Delta \mathbf{u} + \mathbf{b} \cdot \nabla \mathbf{u} + g \mathbf{u} &= \mathbf{f}, \text{ for } \mathbf{x} \in \Omega, 0 < t \leq T \\ \mathbf{u} &= 0, \text{ on } \partial\Omega, \text{ for } 0 < t \leq T, \end{aligned} \tag{1}$$

where \mathbf{u} is the velocity field, ϵ is a diffusion coefficient, g is an absorption/reaction coefficient, and \mathbf{f} is a forcing function.

In the problems with high Peclet number (i.e. $\epsilon \ll 1$) some iterative solvers fail to converge to a solution of (1). We propose a certain Defect Correction Method (DCM), that is stable, computes a solution to (1) for any ϵ with high space and time accuracy, and is computationally attractive.

The general theory of Defect Correction Methods is presented, e.g., in Bohmer, Hemker, Stetter [BHS]. In the late 1970's Hemker (Bohmer, Stetter, Heinrichs and others) discovered that DCM, properly interpreted, is good also for nearly singular problems. Examples for which this has been successful include equilibrium Euler equations (Koren, Lallemand [LK93]), high Reynolds number problems (Layton, Lee, Peterson [LLP02]), viscoelastic problems (Ervin, Lee [EL06]).

There has been an extensive study and development of the DC methods for equilibrium flow problems, see e.g. Hemker[Hem82], Koren[K91], Heinrichs[Hei96], Layton, Lee, Peterson[LLP02], Ervin, Lee[EL06]. On the other hand, there is a parallel development of DCM's, for initial value problems in which no spacial stabilization is used, but DCM is used to increase the accuracy of the time discretization. This work contains no reports of instabilities: see, e.g., Heywood, Rannacher[HR90], Hemker, Shishkin[HSS], Minion[M04], Bourlioux, Layton, Minion [BLM03].

It was shown in [L07] that the natural idea of time stepping combined with the DCM in space for the associated quasi-equilibrium problem gives an oscillatory computed solution of poor quality. Another DC method was introduced for an evolutionary PDE, that was proven to be stable and accurate.

The method, presented in this paper, is the modification (aiming at higher accuracy in time) of the DCM for the evolutionary PDEs, presented in [L07]. Compared to the method in [L07], the right hand side of the system is modified in the correction step, resulting in higher time accuracy with no extra computational cost.

The method proceeds as follows: first we compute the AV approximation $\mathbf{u}_1^h \in X^h$ via

$$L_{\epsilon+h}^h(\mathbf{u}_1^h) = \mathbf{f},$$

where

$$L_{\epsilon+h}^h(\mathbf{u}^h) = \mathbf{u}_t^h - (h + \epsilon)\Delta \mathbf{u}^h + \mathbf{b} \cdot \nabla \mathbf{u}^h + g \mathbf{u}^h.$$

The accuracy of the approximation is then increased by the correction step: compute $\mathbf{u}_2^h \in X^h$, satisfying

$$L_{\epsilon+h}^h(\mathbf{u}_2^h) - L_{\epsilon+h}^h(\mathbf{u}_1^h) = \mathbf{f} - L_\epsilon^h(\mathbf{u}_1^h) + B(\mathbf{u}_1^h).$$

Here $B(\cdot)$ is the time difference operator, that increases the accuracy of the discrete time difference for \mathbf{u}_t .

The Crank-Nicolson time discretization, combined with the two-step defect correction method in space leads to the following system of equations for $\mathbf{u}_1^{h,n+1}, \mathbf{u}_2^{h,n+1} \in \mathbf{X}^h, \forall \mathbf{v}^h \in \mathbf{X}^h$ at $t = t_{n+1}, n \geq 0$, with $k := \Delta t = t_{i+1} - t_i$

$$\left(\frac{\mathbf{u}_1^{h,n+1} - \mathbf{u}_1^{h,n}}{k}, \mathbf{v}^h\right) + (h + \epsilon)(\nabla\left(\frac{\mathbf{u}_1^{h,n+1} + \mathbf{u}_1^{h,n}}{2}\right), \nabla\mathbf{v}^h) + (\mathbf{b} \cdot \nabla\left(\frac{\mathbf{u}_1^{h,n+1} + \mathbf{u}_1^{h,n}}{2}\right), \mathbf{v}^h) \tag{2a}$$

$$+ g\left(\frac{\mathbf{u}_1^{h,n+1} + \mathbf{u}_1^{h,n}}{2}, \mathbf{v}^h\right) = (\mathbf{f}(t_{n+1/2}), \mathbf{v}^h),$$

$$\left(\frac{\mathbf{u}_2^{h,n+1} - \mathbf{u}_2^{h,n}}{k}, \mathbf{v}^h\right) + (h + \epsilon)(\nabla\left(\frac{\mathbf{u}_2^{h,n+1} + \mathbf{u}_2^{h,n}}{2}\right), \nabla\mathbf{v}^h) + (\mathbf{b} \cdot \nabla\left(\frac{\mathbf{u}_2^{h,n+1} + \mathbf{u}_2^{h,n}}{2}\right), \mathbf{v}^h) \tag{2b}$$

$$+ g\left(\frac{\mathbf{u}_2^{h,n+1} + \mathbf{u}_2^{h,n}}{2}, \mathbf{v}^h\right) = (\mathbf{f}(t_{n+1/2}), \mathbf{v}^h) + h(\nabla\left(\frac{\mathbf{u}_1^{h,n+1} + \mathbf{u}_1^{h,n}}{2}\right), \nabla\mathbf{v}^h) + B_n(\mathbf{u}_1^h, \mathbf{v}^h),$$

where

$$B_0(u, v) = \frac{1}{12}k^2 \left(\frac{u^4 - 5u^3 + 9u^2 - 7u + 2u^0}{k^3}, v\right) - \frac{1}{16}k^2 \left(\frac{f(t_3) - 5f(t_2) + 7f(t_1) - 3f(t_0)}{k^2}, v\right), \tag{3a}$$

$$B_n(u, v) = -\frac{1}{12}k^2 \left(\frac{u^{n+2} - 3u^{n+1} + 3u^n - u^{n-1}}{k^3}, v\right) + \frac{1}{16}k^2 \left(\frac{f(t_{n+2}) - f(t_{n+1}) - f(t_n) + f(t_{n-1})}{k^2}, v\right), \text{ for } n = 1, \dots, N-2, \tag{3b}$$

$$B_{N-1}(u, v) = -\frac{1}{12}k^2 \left(\frac{2u^N - 7u^{N-1} + 9u^{N-2} - 5u^{N-3} + u^{N-4}}{k^3}, v\right) + \frac{1}{16}k^2 \left(\frac{3f(t_N) - 7f(t_{N-1}) + 5f(t_{N-2}) - f(t_{N-3})}{k^2}, v\right). \tag{3c}$$

Depending on the current time level, we vary the templates - this demonstrates the resilience of the method. However, the condition $N \geq 4$ needs to be satisfied, where $N = T/k$ is the number of time levels.

Note that the operator B is chosen so that for any n the true solution \mathbf{u} satisfies

$$\begin{aligned} & \left(\frac{\mathbf{u}(t_{n+1}) - \mathbf{u}(t_n)}{k}, \mathbf{v}^h \right) + (h + \epsilon) \left(\nabla \left(\frac{\mathbf{u}(t_{n+1}) + \mathbf{u}(t_n)}{2} \right), \nabla \mathbf{v}^h \right) + (\mathbf{b} \cdot \nabla \left(\frac{\mathbf{u}(t_{n+1}) + \mathbf{u}(t_n)}{2} \right), \mathbf{v}^h) \\ & + g \left(\frac{\mathbf{u}(t_{n+1}) + \mathbf{u}(t_n)}{2}, \mathbf{v}^h \right) = (\mathbf{f}(t_{n+1/2}), \mathbf{v}^h) + h \left(\nabla \left(\frac{\mathbf{u}(t_{n+1}) + \mathbf{u}(t_n)}{2} \right), \nabla \mathbf{v}^h \right) + B_n(\mathbf{u}, \mathbf{v}^h) \\ & \qquad \qquad \qquad + k^4 (\mathbf{u}^{(5)}(t_{n+\theta}), \mathbf{v}^h), \end{aligned}$$

for some $\theta \in]0, 1[$.

Also, the only extra computational cost for the correction step is due to the storage of a few vectors $\mathbf{u}_1^{h,i}$. The Crank-Nicolson scheme is used for computing both \mathbf{u}_1^h and \mathbf{u}_2^h , but the time accuracy of the approximate solution \mathbf{u}_2^h is increased to be $O(k^4)$.

The method is proven to be unconditionally stable over the finite time; it is also stable over all time under the assumption $g - \frac{1}{2} \nabla \cdot \mathbf{b} \geq \beta > 0$.

In section 2 we briefly describe notation used and a few established results. Stability of the method is proven in Section 3. We conclude with the numerical results, proving the error estimates for the method - this is presented in Section 4.

2 Notation and preliminaries

We begin with a few definitions, assumptions, and forms used, and conclude the section with a statement of the method to be studied. The variational formulation of (1) is naturally stated in

$$\mathbf{X} := H_0^1(\Omega)^d = \{ \mathbf{v} : \Omega \rightarrow \mathbb{R}^d, \mathbf{v} \in L^2(\Omega)^d, \nabla \mathbf{v} \in L^2(\Omega)^d, \mathbf{v} = 0 \text{ on } \partial\Omega \}.$$

We use the standard L^2 norm, $\|\cdot\|$, and the usual norm on the Sobolev space H^k , namely $\|\cdot\|_k$.

We make several common assumptions.

Assumption 2.1 *There exists a constant β such that*

$$g - \frac{1}{2} \nabla \cdot \mathbf{b} \geq \beta > 0.$$

The method is proven to be stable over a finite time even if the Assumption 2.1 doesn't hold. If it does, the method is stable over all time.

We shall assume that the velocity finite element spaces $\mathbf{X}^h \subset \mathbf{X}$ are conforming and have typical approximation properties of finite element spaces commonly in use. Namely, we take \mathbf{X}^h to be spaces of continuous piecewise polynomials of degree k , with $k \geq 1$.

The interpolating properties of \mathbf{X}^h are given by the following assumption.

Assumption 2.2 For any function $\mathbf{u} \in \mathbf{X}$

$$\inf_{\chi \in \mathbf{X}^h} \{ \|\mathbf{u} - \chi\| + h \|\nabla(\mathbf{u} - \chi)\| \} \leq ch^{r+1} \|\mathbf{u}\|_{r+1}, \quad 1 \leq r \leq k.$$

We conclude the preliminaries by formulating the discrete Gronwall's lemma, see, e.g. [HR90]

Lemma 2.1 Let k, B , and $a_\mu, b_\mu, c_\mu, \gamma_\mu$, for integers $\mu \geq 0$, be nonnegative numbers such that:

$$a_n + k \sum_{\mu=0}^n b_\mu \leq k \sum_{\mu=0}^n \gamma_\mu a_\mu + k \sum_{\mu=0}^n c_\mu + B \text{ for } n \geq 0.$$

Suppose that $k\gamma_\mu < 1$ for all μ , and set $\sigma_\mu = (1 - k\gamma_\mu)^{-1}$. Then

$$a_n + k \sum_{\mu=0}^n b_\mu \leq e^{k \sum_{\mu=0}^n \sigma_\mu \gamma_\mu} \cdot [k \sum_{\mu=0}^n c_\mu + B].$$

3 Stability of the method

In this section we prove the unconditional stability of the discrete artificial viscosity approximation \mathbf{u}_1^h and use this result to prove stability of the higher order approximation \mathbf{u}_2^h . The approximations \mathbf{u}_1^h and \mathbf{u}_2^h are shown to be bounded uniformly in ϵ .

Theorem 3.1 Let $\mathbf{f} \in L^2(0, T; L^2(\Omega))$. Let $g - \frac{1}{2} \nabla \cdot \mathbf{b} \geq \beta > -\infty$. If $\beta < 0$, let the length of the time step satisfy $k|\beta| < 1/4$. Then the approximation \mathbf{u}_1^h , satisfying (2a), is stable over the finite time $T < \infty$. Specifically, there exist positive constants C_1, C_2 such that for any $n \leq N - 1$

$$\begin{aligned} & \|\mathbf{u}_1^{h,n+1}\|^2 + k \sum_{i=0}^n (h + \epsilon) \|\nabla(\frac{\mathbf{u}_1^{h,i+1} + \mathbf{u}_1^{h,i}}{2})\|^2 \\ & \leq e^{C_1 T} \left(\|\mathbf{u}_1^{h,0}\|^2 + \frac{1}{C_2} k \sum_{i=0}^n \|\mathbf{f}(t_{i+1/2})\|^2 \right). \end{aligned} \quad (4)$$

If Assumption 2.1 is satisfied, then \mathbf{u}_1^h is stable over all time and

$$\begin{aligned} & \|\mathbf{u}_1^{h,n+1}\|^2 + \beta k \sum_{i=0}^n \|\frac{\mathbf{u}_1^{h,i+1} + \mathbf{u}_1^{h,i}}{2}\|^2 + k \sum_{i=0}^n (h + \epsilon) \|\nabla(\frac{\mathbf{u}_1^{h,i+1} + \mathbf{u}_1^{h,i}}{2})\|^2 \\ & \leq \|\mathbf{u}_1^{h,0}\|^2 + \frac{1}{\beta} k \sum_{i=0}^n \|\mathbf{f}(t_{i+1/2})\|^2. \end{aligned} \quad (5)$$

Proof: Take $\mathbf{v}^h = \frac{\mathbf{u}_1^{h,n+1} + \mathbf{u}_1^{h,n}}{2} \in \mathbf{X}^h$ in (2a). Apply Green's theorem to the last two terms on the left hand side (with $\mathbf{u}_1^h = 0$ on $\partial\Omega$) and use the assumption $g - \frac{1}{2}\nabla \cdot \mathbf{b} \geq \beta$. The Cauchy-Schwartz and Young's inequalities, applied to the left hand side, yield

$$\begin{aligned} & \frac{\|\mathbf{u}_1^{h,n+1}\|^2 - \|\mathbf{u}_1^{h,n}\|^2}{2k} + (h + \epsilon) \|\nabla(\frac{\mathbf{u}_1^{h,n+1} + \mathbf{u}_1^{h,n}}{2})\|^2 \\ & + \beta \|\frac{\mathbf{u}_1^{h,n+1} + \mathbf{u}_1^{h,n}}{2}\|^2 \leq (\mathbf{f}(t_{n+1/2}), \frac{\mathbf{u}_1^{h,n+1} + \mathbf{u}_1^{h,n}}{2}). \end{aligned} \quad (6)$$

If Assumption 2.1 is satisfied, we bound the right hand side of (6) by

$$|(\mathbf{f}(t_{n+1/2}), \frac{\mathbf{u}_1^{h,n+1} + \mathbf{u}_1^{h,n}}{2})| \leq \frac{1}{2\beta} \|\mathbf{f}(t_{n+1/2})\|^2 + \frac{\beta}{2} \|\frac{\mathbf{u}_1^{h,n+1} + \mathbf{u}_1^{h,n}}{2}\|^2. \quad (7)$$

Multiply (6) by $2k$ and sum over the time levels $i = 0, \dots, n + 1$. Using (7), we obtain

$$\begin{aligned} & \|\mathbf{u}_1^{h,n+1}\|^2 + k \sum_{i=0}^n 2(h + \epsilon) \|\nabla(\frac{\mathbf{u}_1^{h,i+1} + \mathbf{u}_1^{h,i}}{2})\|^2 \\ & + k \sum_{i=0}^n \beta \|\frac{\mathbf{u}_1^{h,i+1} + \mathbf{u}_1^{h,i}}{2}\|^2 \leq \|\mathbf{u}_1^{h,0}\|^2 + k \sum_{i=0}^n \frac{1}{\beta} \|\mathbf{f}(t_{i+1/2})\|^2, \end{aligned} \quad (8)$$

which proves stability over all time (provided that Assumption 2.1 is satisfied).

If $g - \frac{1}{2}\nabla \cdot \mathbf{b} \geq \beta$ with $-\infty < \beta < 0$, then we bound the right hand side of (6) by

$$|(\mathbf{f}(t_{n+1/2}), \frac{\mathbf{u}_1^{h,n+1} + \mathbf{u}_1^{h,n}}{2})| \leq \frac{1}{4|\beta|} \|\mathbf{f}(t_{n+1/2})\|^2 + |\beta| \|\frac{\mathbf{u}_1^{h,n+1} + \mathbf{u}_1^{h,n}}{2}\|^2. \quad (9)$$

It follows from (6),(9) and the triangle inequality that

$$\begin{aligned} & \frac{\|\mathbf{u}_1^{h,n+1}\|^2 - \|\mathbf{u}_1^{h,n}\|^2}{2k} + (h + \epsilon) \|\nabla(\frac{\mathbf{u}_1^{h,n+1} + \mathbf{u}_1^{h,n}}{2})\|^2 \\ & \leq \frac{1}{4|\beta|} \|\mathbf{f}(t_{n+1/2})\|^2 + |\beta| (\|\mathbf{u}_1^{h,n+1}\|^2 + \|\mathbf{u}_1^{h,n}\|^2). \end{aligned} \quad (10)$$

Multiply (10) by $2k$ and sum over the time levels $i = 0, \dots, n + 1$. Under the condition $k|\beta| < 1/4$ the discrete Gronwall's lemma yields

$$\begin{aligned} & \|\mathbf{u}_1^{h,n+1}\|^2 + k \sum_{i=0}^n 2(h + \epsilon) \|\nabla(\frac{\mathbf{u}_1^{h,i+1} + \mathbf{u}_1^{h,i}}{2})\|^2 \\ & \leq e^{cT} \left(\|\mathbf{u}_1^{h,0}\|^2 + k \sum_{i=0}^n \frac{1}{2|\beta|} \|\mathbf{f}(t_{i+1/2})\|^2 \right), \end{aligned}$$

with $c > 0$.

■

We now proceed to the proof of stability of \mathbf{u}_2^h . It follows from (3) that $|B_i(\mathbf{u}_1^h, \mathbf{v}^h)| \leq C\|\mathbf{v}^h\|$ for any $\mathbf{v}^h \in \mathbf{X}^h$, provided that the time difference $\frac{\mathbf{u}_1^{h,i+1} - \mathbf{u}_1^{h,i}}{k}$ is bounded for any $i = 0, \dots, N-1$. Hence, we begin by establishing the bound for $\frac{\mathbf{u}_1^{h,i+1} - \mathbf{u}_1^{h,i}}{k}$.

Lemma 3.1 *Let $\mathbf{u}_1^{h,0} \in H^2(\Omega)$, $\mathbf{f}_t \in L^2(0, T; L^2(\Omega))$. Let $g - \frac{1}{2}\nabla \cdot \mathbf{b} \geq \beta > -\infty$. If $\beta < 0$, let the length of the time step satisfy $k|\beta| < 1/4$. Then $\frac{\mathbf{u}_1^{h,n+1} - \mathbf{u}_1^{h,n}}{k}$ is bounded for the finite time $T < \infty$. Specifically, there exist positive constants $c, C = C(\mathbf{b}, g, \mathbf{f}, \mathbf{u}_1^{h,0})$ such that*

$$\begin{aligned} & \left\| \frac{\mathbf{u}_1^{h,n+1} - \mathbf{u}_1^{h,n}}{k} \right\|^2 + k \sum_{i=1}^n \frac{1}{2} (h + \epsilon) \left\| \nabla \left(\frac{\mathbf{u}_1^{h,i+1} - \mathbf{u}_1^{h,i-1}}{k} \right) \right\|^2 \\ & \leq e^{cT} \left(C + k \sum_{i=1}^n \frac{1}{2\beta} \left\| \frac{\mathbf{f}(t_{i+1/2}) - \mathbf{f}(t_{i-1/2})}{k} \right\|^2 \right). \end{aligned}$$

If Assumption 2.1 is satisfied, then $\frac{\mathbf{u}_1^{h,n+1} - \mathbf{u}_1^{h,n}}{k}$ is bounded over all time: there exists $C = C(\mathbf{b}, g, \mathbf{f}, \mathbf{u}_1^{h,0})$ such that

$$\begin{aligned} & \left\| \frac{\mathbf{u}_1^{h,n+1} - \mathbf{u}_1^{h,n}}{k} \right\|^2 + k \sum_{i=1}^n \frac{1}{2} (h + \epsilon) \left\| \nabla \left(\frac{\mathbf{u}_1^{h,i+1} - \mathbf{u}_1^{h,i-1}}{k} \right) \right\|^2 \\ & + k \sum_{i=1}^n \frac{1}{4} \beta \left\| \frac{\mathbf{u}_1^{h,i+1} - \mathbf{u}_1^{h,i-1}}{k} \right\|^2 \leq C + k \sum_{i=1}^n \frac{1}{\beta} \left\| \frac{\mathbf{f}(t_{i+1/2}) - \mathbf{f}(t_{i-1/2})}{k} \right\|^2. \end{aligned}$$

Proof: Consider (2a) at any time level $n \geq 1$. Take $\mathbf{v}^h = \frac{\mathbf{u}_1^{h,n+1} - \mathbf{u}_1^{h,n-1}}{k}$ and make the same choice for \mathbf{v}^h in (2a) at the previous time level. Subtracting the resulting equations leads to

$$\begin{aligned} & \left(\frac{\mathbf{u}_1^{h,n+1} - 2\mathbf{u}_1^{h,n} + \mathbf{u}_1^{h,n-1}}{k}, \frac{\mathbf{u}_1^{h,n+1} - \mathbf{u}_1^{h,n-1}}{k} \right) + \frac{1}{2} (h + \epsilon) k \left\| \nabla \left(\frac{\mathbf{u}_1^{h,n+1} - \mathbf{u}_1^{h,n-1}}{k} \right) \right\|^2 \\ & + \frac{1}{2} k (\mathbf{b} \cdot \nabla \left(\frac{\mathbf{u}_1^{h,n+1} - \mathbf{u}_1^{h,n-1}}{k} \right), \frac{\mathbf{u}_1^{h,n+1} - \mathbf{u}_1^{h,n-1}}{k}) + \frac{1}{2} k g \left\| \frac{\mathbf{u}_1^{h,n+1} - \mathbf{u}_1^{h,n-1}}{k} \right\|^2 \\ & = k \left(\frac{\mathbf{f}(t_{n+1/2}) - \mathbf{f}(t_{n-1/2})}{k}, \frac{\mathbf{u}_1^{h,n+1} - \mathbf{u}_1^{h,n-1}}{k} \right). \end{aligned}$$

Apply Green's theorem to the last two terms on the left hand side (with $\frac{\mathbf{u}_1^{h,n+1} - \mathbf{u}_1^{h,n-1}}{k} = 0$ on $\partial\Omega$) and use the assumption $g - \frac{1}{2}\nabla \cdot \mathbf{b} \geq \beta$. Rewrite the first term on the left hand side, using the identity

$$\left(\frac{\mathbf{u}_1^{h,n+1} - 2\mathbf{u}_1^{h,n} + \mathbf{u}_1^{h,n-1}}{k}, \frac{\mathbf{u}_1^{h,n+1} - \mathbf{u}_1^{h,n-1}}{k} \right) = \left\| \frac{\mathbf{u}_1^{h,n+1} - \mathbf{u}_1^{h,n}}{k} \right\|^2 - \left\| \frac{\mathbf{u}_1^{h,n} - \mathbf{u}_1^{h,n-1}}{k} \right\|^2.$$

This yields

$$\begin{aligned} & \left\| \frac{\mathbf{u}_1^{h,n+1} - \mathbf{u}_1^{h,n}}{k} \right\|^2 - \left\| \frac{\mathbf{u}_1^{h,n} - \mathbf{u}_1^{h,n-1}}{k} \right\|^2 + \frac{1}{2}(h + \epsilon)k \left\| \nabla \left(\frac{\mathbf{u}_1^{h,n+1} - \mathbf{u}_1^{h,n-1}}{k} \right) \right\|^2 \\ & + \frac{1}{2}k\beta \left\| \frac{\mathbf{u}_1^{h,n+1} - \mathbf{u}_1^{h,n-1}}{k} \right\|^2 \leq k \left(\frac{\mathbf{f}(t_{n+1/2}) - \mathbf{f}(t_{n-1/2})}{k}, \frac{\mathbf{u}_1^{h,n+1} - \mathbf{u}_1^{h,n-1}}{k} \right). \end{aligned} \quad (11)$$

Sum (11) over all time levels $i = 1, \dots, n$ and consider the cases $\beta > 0$ and $-\infty < \beta < 0$ separately, as in the proof of Theorem 3.1. If the Assumption 2.1 holds, this yields

$$\begin{aligned} & \left\| \frac{\mathbf{u}_1^{h,n+1} - \mathbf{u}_1^{h,n}}{k} \right\|^2 + k \sum_{i=1}^n \frac{1}{2}(h + \epsilon) \left\| \nabla \left(\frac{\mathbf{u}_1^{h,i+1} - \mathbf{u}_1^{h,i-1}}{k} \right) \right\|^2 \\ & + k \sum_{i=1}^n \frac{1}{4}\beta \left\| \frac{\mathbf{u}_1^{h,i+1} - \mathbf{u}_1^{h,i-1}}{k} \right\|^2 \leq \left\| \frac{\mathbf{u}_1^{h,1} - \mathbf{u}_1^{h,0}}{k} \right\|^2 + k \sum_{i=1}^n \frac{1}{\beta} \left\| \frac{\mathbf{f}(t_{i+1/2}) - \mathbf{f}(t_{i-1/2})}{k} \right\|^2. \end{aligned} \quad (12)$$

If $-\infty < \beta < 0$ and $k|\beta| < 1/4$, it follows from the discrete Gronwall's lemma that

$$\begin{aligned} & \left\| \frac{\mathbf{u}_1^{h,n+1} - \mathbf{u}_1^{h,n}}{k} \right\|^2 + k \sum_{i=1}^n \frac{1}{2}(h + \epsilon) \left\| \nabla \left(\frac{\mathbf{u}_1^{h,i+1} - \mathbf{u}_1^{h,i-1}}{k} \right) \right\|^2 \\ & \leq e^{cT} \left(\left\| \frac{\mathbf{u}_1^{h,1} - \mathbf{u}_1^{h,0}}{k} \right\|^2 + k \sum_{i=1}^n \frac{1}{2\beta} \left\| \frac{\mathbf{f}(t_{i+1/2}) - \mathbf{f}(t_{i-1/2})}{k} \right\|^2 \right). \end{aligned} \quad (13)$$

To complete the proof, we need a bound on $\left\| \frac{\mathbf{u}_1^{h,1} - \mathbf{u}_1^{h,0}}{k} \right\|^2$. Consider (2a) at $n = 0$ and take $v^h = \frac{\mathbf{u}_1^{h,1} - \mathbf{u}_1^{h,0}}{k}$. This gives

$$\begin{aligned} & \left\| \frac{\mathbf{u}_1^{h,1} - \mathbf{u}_1^{h,0}}{k} \right\|^2 + (h + \epsilon) \left(\nabla \left(\frac{\mathbf{u}_1^{h,1} + \mathbf{u}_1^{h,0}}{2} \right), \nabla \left(\frac{\mathbf{u}_1^{h,1} - \mathbf{u}_1^{h,0}}{k} \right) \right) \\ & + (\mathbf{b} \cdot \nabla \left(\frac{\mathbf{u}_1^{h,1} + \mathbf{u}_1^{h,0}}{2} \right), \frac{\mathbf{u}_1^{h,1} - \mathbf{u}_1^{h,0}}{k}) + g \left(\frac{\mathbf{u}_1^{h,1} + \mathbf{u}_1^{h,0}}{2}, \frac{\mathbf{u}_1^{h,1} - \mathbf{u}_1^{h,0}}{k} \right) \\ & = (\mathbf{f}(t_{1/2}), \frac{\mathbf{u}_1^{h,1} - \mathbf{u}_1^{h,0}}{k}). \end{aligned} \quad (14)$$

Using the identity $\frac{\mathbf{u}_1^{h,1} + \mathbf{u}_1^{h,0}}{2} = \frac{\mathbf{u}_1^{h,1} - \mathbf{u}_1^{h,0}}{2} + \mathbf{u}_1^{h,0}$, we can rewrite the last three terms in the left hand side of (14). Applying Green's theorem as in the proofs above, yields

$$\begin{aligned} & \left\| \frac{\mathbf{u}_1^{h,1} - \mathbf{u}_1^{h,0}}{k} \right\|^2 + (h + \epsilon) \left\| \nabla \left(\frac{\mathbf{u}_1^{h,1} - \mathbf{u}_1^{h,0}}{k} \right) \right\|^2 + (h + \epsilon) (\Delta \mathbf{u}_1^{h,0}, \frac{\mathbf{u}_1^{h,1} - \mathbf{u}_1^{h,0}}{k}) \\ & + \frac{1}{2}k\beta \left\| \frac{\mathbf{u}_1^{h,1} - \mathbf{u}_1^{h,0}}{k} \right\|^2 + (\mathbf{b} \cdot \nabla \mathbf{u}_1^{h,0}, \frac{\mathbf{u}_1^{h,1} - \mathbf{u}_1^{h,0}}{k}) + g(\mathbf{u}_1^{h,0}, \frac{\mathbf{u}_1^{h,1} - \mathbf{u}_1^{h,0}}{k}) \\ & \leq (\mathbf{f}(t_{1/2}), \frac{\mathbf{u}_1^{h,1} - \mathbf{u}_1^{h,0}}{k}). \end{aligned}$$

The Cauchy-Schwartz and Young's inequalities give

$$\frac{1}{2} \left\| \frac{\mathbf{u}_1^{h,1} - \mathbf{u}_1^{h,0}}{k} \right\|^2 + (h + \epsilon) \left\| \nabla \left(\frac{\mathbf{u}_1^{h,1} - \mathbf{u}_1^{h,0}}{k} \right) \right\|^2 + \frac{1}{2} k \beta \left\| \frac{\mathbf{u}_1^{h,1} - \mathbf{u}_1^{h,0}}{k} \right\|^2 \leq C,$$

where $C = \|\mathbf{b} \cdot \nabla \mathbf{u}_1^{h,0}\|^2 + 2g^2 \|\mathbf{u}_1^{h,0}\|^2 + 2(h + \epsilon)^2 \|\Delta \mathbf{u}_1^{h,0}\|^2 + \|\mathbf{f}(t_{1/2})\|^2 < \infty$. Hence, if Assumption 2.1 is satisfied, or if $-\infty < \beta < 0$ and $k|\beta| < 1/4$, we obtain the bound

$$\left\| \frac{\mathbf{u}_1^{h,1} - \mathbf{u}_1^{h,0}}{k} \right\|^2 + (h + \epsilon) \left\| \nabla \left(\frac{\mathbf{u}_1^{h,1} - \mathbf{u}_1^{h,0}}{k} \right) \right\|^2 \leq C < \infty. \quad (15)$$

Inserting the bound on $\left\| \frac{\mathbf{u}_1^{h,1} - \mathbf{u}_1^{h,0}}{k} \right\|^2$ into (12) and (13) completes the proof. ■

The unconditional stability of \mathbf{u}_2^h (uniform in ϵ) follows from Theorem 3.1 and Lemma 3.1. The last term in the right hand side of (2b) is bounded by means of Lemma 3.1.

Theorem 3.2 *Let the assumptions of Theorem 3.1 and Lemma 3.1 be satisfied.*

Let $g - \frac{1}{2} \nabla \cdot \mathbf{b} \geq \beta > -\infty$. If $\beta < 0$, let the length of the time step satisfy $k|\beta| < 1/4$. Then the approximation \mathbf{u}_2^h , satisfying (2b), is stable over the finite time $T < \infty$. Specifically, there exist positive constants c_1, C_2, C_3 such that for any $n \leq N - 1$

$$\begin{aligned} & \|\mathbf{u}_2^{h,n+1}\|^2 + k \sum_{i=0}^n (h + \epsilon) \left\| \nabla \left(\frac{\mathbf{u}_2^{h,i+1} + \mathbf{u}_2^{h,i}}{2} \right) \right\|^2 \\ & \leq e^{c_1 T} \left(C_3 + \|\mathbf{u}_2^{h,0}\|^2 + \|\mathbf{u}_1^{h,0}\|^2 + \frac{1}{C_2} k \sum_{i=0}^n \|\mathbf{f}(t_{i+1/2})\|^2 \right). \end{aligned}$$

If Assumption 2.1 is satisfied, then \mathbf{u}_1^h is stable over all time and

$$\begin{aligned} & \|\mathbf{u}_2^{h,n+1}\|^2 + \beta k \sum_{i=0}^n \left\| \frac{\mathbf{u}_2^{h,i+1} + \mathbf{u}_2^{h,i}}{2} \right\|^2 + k \sum_{i=0}^n (h + \epsilon) \left\| \nabla \left(\frac{\mathbf{u}_2^{h,i+1} + \mathbf{u}_2^{h,i}}{2} \right) \right\|^2 \\ & \leq C + \|\mathbf{u}_2^{h,0}\|^2 + \|\mathbf{u}_1^{h,0}\|^2 + \frac{1}{\beta} k \sum_{i=0}^n \|\mathbf{f}(t_{i+1/2})\|^2, \\ & \text{with } C = C(\mathbf{b}, g, \mathbf{f}, \mathbf{u}_1^{h,0}). \end{aligned}$$

Proof: The proof resembles the proof of Theorem 3.1. Take $\mathbf{v}^h = \frac{\mathbf{u}_2^{h,n+1} + \mathbf{u}_2^{h,n}}{2} \in X^h$ in (2b). Apply Green's theorem to the last two terms on the left hand side. This gives

$$\begin{aligned} & \frac{\|\mathbf{u}_2^{h,n+1}\|^2 - \|\mathbf{u}_2^{h,n}\|^2}{2k} + (h + \epsilon) \|\nabla(\frac{\mathbf{u}_2^{h,n+1} + \mathbf{u}_2^{h,n}}{2})\|^2 + \beta \|\frac{\mathbf{u}_2^{h,n+1} + \mathbf{u}_2^{h,n}}{2}\|^2 \\ & \leq (\mathbf{f}(t_{n+1/2}), \frac{\mathbf{u}_2^{h,n+1} + \mathbf{u}_2^{h,n}}{2}) + h(\nabla(\frac{\mathbf{u}_1^{h,n+1} + \mathbf{u}_1^{h,n}}{2}), \nabla(\frac{\mathbf{u}_2^{h,n+1} + \mathbf{u}_2^{h,n}}{2})) \\ & \quad + B_n(\mathbf{u}_1^h, \frac{\mathbf{u}_2^{h,n+1} + \mathbf{u}_2^{h,n}}{2}). \end{aligned} \quad (16)$$

It is easy to verify that for any n

$$|B_n(\mathbf{u}_1^h, \frac{\mathbf{u}_2^{h,n+1} + \mathbf{u}_2^{h,n}}{2})| \leq C + \frac{1}{2}|\beta| \|\frac{\mathbf{u}_2^{h,n+1} + \mathbf{u}_2^{h,n}}{2}\|^2, \quad (17)$$

$$\text{where } C = \frac{1}{|\beta|} \max_{0 \leq i \leq N-1} \|\frac{\mathbf{u}_1^{h,i+1} - \mathbf{u}_1^{h,i}}{k}\|^2 + \frac{1}{|\beta|} k^2 \max_{0 \leq i \leq N-1} \|\frac{\mathbf{f}(t_{i+1}) - \mathbf{f}(t_i)}{k}\|^2.$$

It also follows from Lemma 3.1 that this constant is finite, $C < \infty$.

Using Cauchy-Schwartz and Young's inequalities gives

$$\begin{aligned} h |(\nabla(\frac{\mathbf{u}_1^{h,n+1} + \mathbf{u}_1^{h,n}}{2}), \nabla(\frac{\mathbf{u}_2^{h,n+1} + \mathbf{u}_2^{h,n}}{2}))| & \leq \frac{1}{2}(h + \epsilon) \|\nabla(\frac{\mathbf{u}_2^{h,n+1} + \mathbf{u}_2^{h,n}}{2})\|^2 \\ & \quad + \frac{h^2}{2(h + \epsilon)^2} (h + \epsilon) \|\nabla(\frac{\mathbf{u}_1^{h,n+1} + \mathbf{u}_1^{h,n}}{2})\|^2. \end{aligned} \quad (18)$$

Multiply (16) by $2k$, sum over the time levels and use (17),(18). Theorem 3.1 gives the bound on $k \sum_{i=0}^n (h + \epsilon) \|\nabla(\frac{\mathbf{u}_1^{h,i+1} + \mathbf{u}_1^{h,i}}{2})\|^2$. The cases when Assumption 2.1 holds and when $-\infty < \beta < 0$, $k|\beta| < 1/4$ are treated as in the proof of Theorem 3.1. ■

Thus, the method is unconditionally stable for all time, provided that the Assumption 2.1 is satisfied. The approximate solutions \mathbf{u}_1^h and \mathbf{u}_2^h are bounded uniformly in h and ϵ . If the condition $g - \frac{1}{2}\nabla \cdot \mathbf{b} \geq \beta$ is satisfied with $-\infty < \beta < 0$, then the assumption $k|\beta| < 1/4$ is needed to conclude stability and uniform boundedness of the approximate solutions over a finite time.

4 Computational results

Based on the results of [L07] (and the general theory of Defect Correction Methods), we are expecting to obtain the following error estimates:

$$\begin{aligned} \|\mathbf{u} - \mathbf{u}_1^h\|_{L^2(0,T;L^2(\Omega))} &\leq C(h + k^2), \\ \|\mathbf{u} - \mathbf{u}_2^h\|_{L^2(0,T;L^2(\Omega))} &\leq C(h\|\mathbf{u} - \mathbf{u}_1^h\|_{L^2(0,T;L^2(\Omega))} + k^4) \\ &\leq C(h^2 + hk^2 + k^4). \end{aligned}$$

Consider the following transport problem in $\Omega = [0, 1] \times [0, 1]$: find u satisfying (1) with $\epsilon = 10^{-5}$, $b = (1, 1)^T$, $g = 1$ and $f = [(2 + 2\epsilon\pi^2) \sin(\pi x) \sin(\pi y) + \pi \sin(\pi x + \pi y)]e^t$. This problem has a solution $u = \sin(\pi x) \sin(\pi y)e^t$.

The results presented in the following tables are obtained by using the software *FreeFEM+*. In order to draw conclusions about the convergence rate, we take $k = h$ and $k = \sqrt{h}$. Note that the method needs the number of time steps $N \geq 4$.

Table 1: Error estimates, $\epsilon = 10^{-5}$, $T = 1$, $k = h$

h	$\ \mathbf{u} - \mathbf{u}_1^h\ _{L^2(0,T;L^2(\Omega))}$	<i>rate</i>	$\ \mathbf{u} - \mathbf{u}_2^h\ _{L^2(0,T;L^2(\Omega))}$	<i>rate</i>
1/4	0.648482		0.36992	
1/8	0.406708	0.6731	0.159371	1.2148
1/16	0.233742	0.7991	0.0590029	1.4335
1/32	0.126373	0.8872	0.0202292	1.5443

Table 2: Error estimates, $\epsilon = 10^{-5}$, $T = 1$, $k = \sqrt{h}$

h	$\ \mathbf{u} - \mathbf{u}_1^h\ _{L^2(0,T;L^2(\Omega))}$	<i>rate</i>	$\ \mathbf{u} - \mathbf{u}_2^h\ _{L^2(0,T;L^2(\Omega))}$	<i>rate</i>
1/16	0.267117		0.059804	
1/64	0.0717964	0.9477	0.00712605	1.5345
1/256	0.0179559	0.9997	0.00076384	1.6109

The method doesn't resolve the problem of oscillations in the boundary layer, but the oscillations do not spread beyond the boundary layer. This is verified by the figure plots of the computed solution \mathbf{u}_2^h , as the mesh size and the time step are decreased.

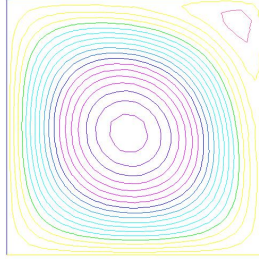


Figure 1: Computed solution \mathbf{u}_2^h , $k = h = 1/8$

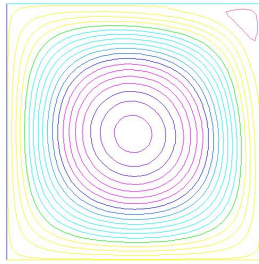


Figure 2: Computed solution \mathbf{u}_2^h , $k = h = 1/16$

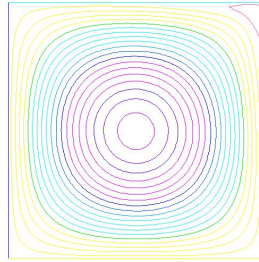


Figure 3: Computed solution \mathbf{u}_2^h , $k = h = 1/32$

Finally, we compute the approximation error away from the boundary layer, namely in $(0, 0.75) \times (0, 0.75)$.

Table 3: Error estimates in $(0, 0.75) \times (0, 0.75)$, $\epsilon = 10^{-5}$, $k = h$

h	$\ \mathbf{u} - \mathbf{u}_1^h\ _{L^2(0,T;L^2(\Omega))}$	<i>rate</i>	$\ \mathbf{u} - \mathbf{u}_2^h\ _{L^2(0,T;L^2(\Omega))}$	<i>rate</i>
1/4	0.545619		0.26598	
1/8	0.32111	0.7648	0.0844715	1.6548
1/16	0.172327	0.8979	0.02094	2.0122

Table 4: Error estimates in $(0, 0.75) \times (0, 0.75)$, $\epsilon = 10^{-5}$, $k = \sqrt{h}$

h	$\ \mathbf{u} - \mathbf{u}_1^h\ _{L^2(0,T;L^2(\Omega))}$	<i>rate</i>	$\ \mathbf{u} - \mathbf{u}_2^h\ _{L^2(0,T;L^2(\Omega))}$	<i>rate</i>
1/16	0.197961		0.0186758	
1/64	0.0491873	1.0044	0.0016107	1.7677
1/256	0.0120236	1.0162	0.000112279	1.9213

Hence, the computational results verify the claimed accuracy of the method away from boundaries. Also, the oscillations of the computed solution do not spread outside of the boundary layer.

References

- [BHS] K. BOHMER, P. W. HEMKER, H. J. STETTER, The defect correction approach, in: K. Bohmer, H. J. Stetter (Eds.), *Defect Correction Methods. Theory and Applications*, Springer Verlag, 1984, pp. 1–32.
- [L07] A. LABOVSKII, *A defect correction method for the time-dependent Navier-Stokes equations*, To appear in *Numerical Methods for Partial Differential Equations* (2007)
- [BLM03] A. BOURLIOUX, A. T. LAYTON, M. L. MINION, High-Order Multi-Implicit Spectral Deferred Correction Methods for Problems of Reactive Flows, *Journal of Computational Physics*, Vol. 189, No. 2, pp. 651-675, 2003.
- [KG02] W. KRESS, B. GUSTAFSSON, Deferred Correction Methods for Initial Boundary Value Problems, *Journal of Scientific Computing*, Springer Netherlands, Vol. 17, No. 1-4, 2002.
- [DGR00] A. DUTT, L. GREENGARD, V. ROKHLIN, Spectral deferred correction methods for ordinary differential equations, *BIT* 40 (2), pp. 241-266, 2000.
- [HSS] P. W. HEMKER, G. I. SHISHKIN, L. P. SHISHKINA, High-order time-accurate schemes for singularly perturbed parabolic convection-diffusion problems with Robin boundary conditions, *Computational Methods in Applied Mathematics*, Vol. 2 (2002), No. 1, pp. 3-25.
- [EL89] V. ERVIN AND W. LAYTON, An analysis of a defect correction method for a model convection diffusion equation, *SIAM J. Numer. Anal.*, 26 (1989), 169-179.

- [EL87] V. ERVIN AND W. LAYTON, High resolution minimal storage algorithms for convection dominated, convection diffusion equations, pp. 1173-1201 in: *Trans. of the Fourth Army Conf. on Appl. Math. and Comp.*, 1987
- [AL83] O. AXELSSON AND W. LAYTON, Defect correction methods for convection dominated, convection-diffusion equations, *RAIRO J. Numer. Anal.* 24 (1990) pp. 423-455.
- [HR90] J. HEYWOOD, R. RANNACHER, Finite-element approximations of the nonstationary Navier-Stokes problem. Part 4: Error analysis for second-order time discretization, *SIAM J. Numer. Anal.*, 2 (1990)
- [EL06] V. J. ERVIN, H. K. LEE, Defect correction method for viscoelastic fluid flows at high Weissenberg number, *Numerical Methods for Partial Differential Equations*, Volume 22, Issue 1, pp. 145 - 164, 2006.
- [LK93] M.-H. LALLEMAND, B. KOREN, Iterative defect correction and multigrid accelerated explicit time stepping schemes for the steady Euler equations, *SIAM Journal on Scientific Computing*, vol. 14, issue 4, 1993.
- [LLP02] W. LAYTON, H. K. LEE, J. PETERSON, A defect-correction method for the incompressible Navier–Stokes equations, *Applied Mathematics and Computation*, Vol. 129, Issue 1, 2002, pp. 1-19.
- [Hem82] P. W. HEMKER, *The use of defect correction for the solution of a singularly perturbed o.d.e.*, Proceedings of the third conference on the numerical treatment of ordinary differential equations, pp. 91-104, Seminarbericht Nr. 46, Berlin.
- [Hei96] W. HEINRICHS, Defect correction for convection dominated flow, *SIAM J. Sci. Comput.*, 17 (1996), 1082-1091
- [K91] B. KOREN, Multigrid and Defect-Correction for the Steady Navier-Stokes Equations, *Applications to Aerodynamics*, C. W. I. Tract 74, Centrum voor Wiskunde en Informatica, Amsterdam, 1991.
- [M04] M. L. MINION, Semi-Implicit Projection Methods for Incompressible Flow based on Spectral Deferred Corrections, *Appl. Numer. Math.*, 48(3-4), 369-387, 2004